



# understand YOUR enterprise PROCESSES

**PET from Elipsis is a process mapping and workflow visualisation tool with a difference:**

By mapping *deliverables* as well as activities you can create *integrated* business process models spanning your extended enterprise.

PET *verifies* the logic and integrity of your set of process models.

By adding durations to your activities you can *automatically* translate process models into time-based plans.

A consciously simplified set of modelling objects makes PET easy to use with no need for prior process expertise. All the PET newcomer needs to bring is a perspective on the work in hand.

what next?



PET continues to attract interest both in Europe and the US, through a diversity of applications.

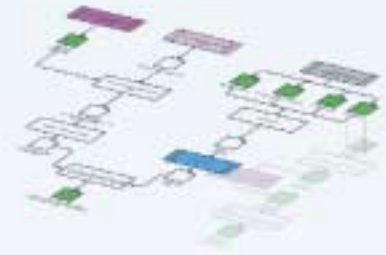
Why not...

- Order a copy of PET from our website. Visit [www.elipsis.com](http://www.elipsis.com) and click on the PET box.
- Book an Internet demonstration of PET. Mail [sales@elipsis.com](mailto:sales@elipsis.com).
- Arrange a PET sales presentation for a group within your your enterprise. Mail [sales@elipsis.com](mailto:sales@elipsis.com).



## PET benefits

- Unlock your Quality Vault – attach procedure to process
- Append reference data – all of it accessible from the graphical model
- Tailor generic processes to suit actual scenarios *quickly and easily*
- Model process in multiple levels of detail and maintain vertical and lateral model linkage – *model in 3 dimensions*



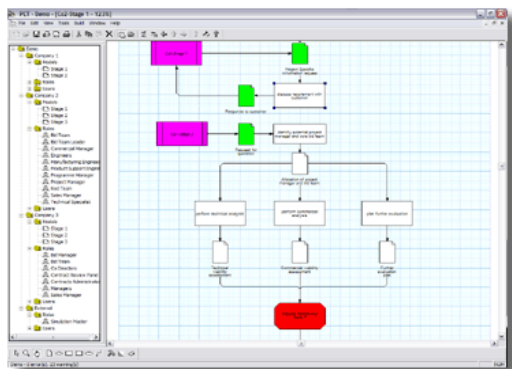
- Model *all* types of process: top level, granular, routine, one-off
- Resource activities, first by role and then by named individuals – *reinforce responsibility and accountability*
- Develop generic template processes and store them in best practice libraries – *off the shelf and ready to use*
- Track flow of work and key deliverables *across organisational boundaries*
- Create a wider understanding of collaborative relationships



**How does PET work?** As you draw the graphical model of your business process, including the inputs and outputs that hold it all together, PET automatically constructs a process database in the background. This maps the flow of deliverables between activities to establish the chain of dependencies upon which the process is founded. The database will even map deliverables across organisational boundaries, maintaining an AKA (Also Known As) list to allow each organisation to retain its native terminology.

**How can I ensure process quality and consistency?** PET uses a well defined process structure, allowing a verification of the process to be performed. PET's verification routines check the model logic ensuring all activities have inputs and deliverables, and that responsibilities have been assigned. PET also runs a simulation and reports on any workflow impasses.

**How can we push our new process knowledge out to the whole enterprise?** PET model-sets (including their data stores) can be passed easily around a project-team using the html export. Full or partial models can also be copied and pasted directly into other applications. With this array of dissemination facilities you can quickly develop a community of PET modellers, collectively creating the bigger picture of the enterprise, tailoring the stock of standard business processes to real project contexts.



#### **But will our teams stick to the defined process?**

PET has been designed with this in mind. The tool allows you to define teams for each activity in the process, and then let these teams resource their own activities and nominate durations. PET can then provide exports to workflow and project management tools, including our own community workflow and management system, DREAMS. The result is a much fuller description of project work and the interactions and commitments entailed throughout the extended project team, which can support *process-based planning*.

#### **Can we make supporting data available at the point of need?**

PET allows modellers to attach reference files and URLs to the model itself, e.g. templates and exemplars attached to deliverables, and guidebooks and checklists to activities. Not only does this increase knowledge transfer when PET models are used within an extended team, but these attachments are also retained within our DREAMS system, to aid the task in hand.

You can also customise the object description fields, to create the depth and detail you require. So, for instance, you can dovetail your process models with your existing Quality Manuals. In effect you are creating a comprehensive and easily navigated picture of the enterprise, sitting atop a repository of vital project and procedural data.

#### **How can I integrate many diverse models but retain a uniform "look"?**

With its simple, standardised symbology and methodology, PET lets a team create end-to-end models that are vast but nonetheless seamless. PET provides many import and merge functions to integrate multiple PET files simply. Hence a community of co-workers can each describe their work in PET independently, subsequently pulling all this information together into the one file for the enterprise as a whole.

PET also helps you to connect your processes with those of your customers and suppliers. The focus on nominating deliverables and mapping inputs and outputs across organisational boundaries will enable you to harmonise processes across the supply base and create end-to-end customer value chains.